



# **NVR4.0 USER MANUAL**

**Series: JNB-NVR4K81265**

**JNB-NVR4K162265**

Thank you for purchasing our products, if you have any questions or requirements, please feel free to contact us.

We will update the contents of user manual based on product function add or change, which will be issued in new version without prior notice.

The user manual only provides guidance for users. Images, chart and other attachment used in this document are only used to illustrate the features and usage.

The user manual is applicable to HD NVR below:

<b>Series</b>	<b>Model</b>	<b>Name</b>

## Catalogue

1.	Product Overview .....	6
1.1.	Introduction .....	6
1.2.	Features .....	6
2.	Operation Instructions .....	10
2.1.	Mouse operation Instructions.....	10
2.2.	Front panel key operation instruction.....	10
2.3.	Input method instruction .....	11
2.4.	Interface Instruction .....	11
2.4.1.	Interface factor instruction .....	11
2.4.2.	Common button introduction .....	12
2.4.3.	Preview window icon instruction.....	12
2.5.	Menu Instruction .....	13
2.5.1.	Bottom Menu .....	13
2.5.2.	Context Menu .....	13
2.5.3.	Cloud Logging State .....	14
3.	Device Installment.....	15
3.1.	Installment Attention.....	15
3.2.	Hard Disk Installation .....	16
3.3.	Connection Peripherals .....	17
3.3.1.	Basic Device Connection .....	17
4.	System Function Introduction .....	18
4.1.	Login/Close Down .....	18
4.1.1.	Login .....	18
4.1.2.	User Log Out.....	19
4.1.3.	Close System.....	19
4.2.	Boot wizard .....	20

---

4.3.	Video Management .....	24
4.3.1.	Search Device .....	24
4.3.2.	Add Device .....	25
4.3.3.	Delete Device .....	26
4.3.4.	Manual Add .....	26
4.3.5.	Modify IP address .....	27
4.3.6.	Batch Modify IP address .....	27
4.3.7.	Channel Order Exchange .....	28
4.3.8.	IPC Setting .....	28
4.3.9.	NVR Network Settings .....	29
4.3.10.	Network tool .....	31
4.4.	IPC Setting .....	32
4.4.1.	Check IPC General Information .....	32
4.4.2.	Time Setting .....	33
4.4.3.	IPC Remote Maintenance .....	33
4.5.	Screen Layout .....	36
4.6.	Rotation .....	36
4.7.	Electronic zoom in and zoom out .....	37
4.8.	Output Adjust .....	38
4.9.	Screenshot .....	38
4.9.1.	Snapshot Capture .....	38
4.9.2.	Picture Management .....	39
4.9.3.	Picture Export .....	40
4.10.	Recording Function .....	40
4.10.1.	Set Recording Plan .....	40
4.10.2.	Playback Recording .....	42
4.10.3.	Playabck Control .....	42
4.10.4.	Video Backup .....	43

---

4.11.	System Settings .....	45
4.11.1.	General Setting .....	45
4.11.2.	Time Setting .....	46
4.11.3.	User Setting .....	47
4.11.4.	Preview Setting .....	50
4.11.5.	Stream Setting .....	51
4.11.6.	Network Setting .....	53
4.11.7.	Email Setting .....	54
4.11.8.	Motion Detection Alarm .....	56
4.11.9.	Video Lost Alarm .....	58
4.11.10.	Alarm Appointment Setting .....	59
4.11.11.	System Log .....	60
4.11.12.	System Maintenance .....	61
4.11.13.	System Basic Information .....	62
4.11.14.	Auto Upgrade .....	63
4.11.15.	Storage Device .....	63
5.	Appendix .....	65
5.1.	Hard Disk Capacity Calculation .....	65
5.1.1.	Hard Disk Total Capacity Corresponding Video Days Calculation( H.264 compression + Low Bit Rate .....	65
5.1.2.	FAQ .....	66

# 1. Product Overview

## 1.1. Introduction

NVR4.0 series are the latest professional monitoring storage devices which have been developed and launched by our company, adopting Hisilicon video processing chipset, integrating excellent video encoder video codec algorithm. NVR4.0 series products own four features that are stability, ease of use, intelligence and perfection. Our NVRs use H.264, H.265 compression algorithm which support ultralow code rate and super-long cable access and embedded Linux real time operation system, support ONVIF protocol, achieve IPC'S auto search, preview and recording without commissioning; APP one second connection to show picture, let our customer enjoy more perfect experience.

## 1.2. Features

### ◆ Real time monitoring

- VGA/HDMI output simultaneously
- Electronic Zoom in
- Screen layout optional
- Auto search, add, preview and recording.
- Fast drag to adjust channel sequence
- All channel 1080P/4K decode

- APP connect and display picture immediately
- Private protocol to access ultralow code rate, super-long cable IPC
- Preview and rotation

#### ◆ **Compression Storage**

- Adopt H.264+, H.265 video compression technology with lower compressed code
- Snapshot
- USB/Mobile HDD backup
- support different recording strategies including overlay-write and stoping recording.
- Multi-channel Video backup at the same time

#### ◆ **Recording Playback**

- real-time video recording and motion detection video recording
- Video search
- Remote access and video replay through Seetong App and Seetong client

#### ◆ **Alarm Function**

- Motion detection alarm
- Stream lost alarm
- Alarm video recording

- Send alarm email and attachment
- Flashing when alarm event is triggered
- Snapshot when alarm event is triggered

#### ◆ **Remote configuration Function**

- time synchronization between IPC and NVR
- NVR configure IPC encoding parameter
- NVR configure IPC channel OSD.

#### ◆ **Network Function**

- Adopt device function to remote control without complex setting,achieve network transmission easily
- IP address modify and DHCP
- Choose Seetong's client/mobile APP system for remote control
- Real-time monitoring using Seetong client or Seetong app / remote PTZ control
- Different users can access to NVR at the same time
- Flexible IP address

#### ◆ **User Management**

- Customizable local user /network user permission
- HDD abnormal loss alarm



- Log operation
- Timing reboot and automatic maintenance
- Support at most 16 users

◆ **Other functions**

- Boot wizard
- 16-channel-NVR/25-channel-NVR/36-channel-NVR provide USB mouse reuse feature. 25-channel-NVR/36-channel\_NVR also provide front panel key control function.
- Different ways of upgrading, including U-disk, Seetong client, Seetong app and self-upgrade.
- U-disk recovery in case that your NVR work abnormally.
- Replace boot logo using our logo-replace tool.
- 25-channel-NVR and 36-channel-NVR as well as our H.265 series also support audio
- Multi-language version switch
- Audio listen through Seetong client and Seetong app
- Modify IP address of ONVIF device, and also a batch of modification to a series of IPC devices.
- Watch dog and auto reboot after power off and sudden failure

## 2. Operation Instructions

### 2.1. Mouse operation Instructions

Mouse key	Action	Function	Example
Left Key	Click	Select	1.Select a preview window,playback window and picture 2.Select a button,edit box,combobox, check box
	Double click	Zoom in/out	1.Switch different screen layout during preview 2. Double click on the video recording bar to start video replay
	Drag	Adjust channel distribution	Exchange two channels
Middle Key	Roll	Change current view	1.Zoom in playback scale; 2.scroll to view ipc device search list 3.scroll to view screenshot search list;
Right Key	Click	Return	Single click to close current window

### 2.2. Front panel key operation instruction

Serial NO.	Name	Explain
1	MENU	Right click on desktop and the default selected item is video management
2	ESC	Return to upper menu
3	UP	Turn to last item

4	DOWN	Turn to next item
5	LEFT	Turn to upper menu
6	RIGHT	Turn to sub menu

## 2.3. Input method instruction

Name	Key Instruction	Function instruction
Number	0~9	Input number from 0~9
Character	! @ # \$ % ^ & * ( ) - { } : "   ? < >	Input symbol
English	a~z A~Z	Input English letters
Big/Small	Shift	Capital letters/lowercase letters switch
Chinese/English	Ctrl	Chinese and English Switch
Delete	←	Delete last character

## 2.4. Interface Instruction

### 2.4.1. Interface factor instruction



Name	Operation	Function Operation	Example
Button	Left click	Save or Cancel	Application,confirm, cancel
		Open sub window	NVR network setting,wizard,video resource setting
Edit Box	Left click	Modify	Modify channel name

Drop-down box	Left click	Select	Change language,select resolution
List Box	Roll	Change current view	View search list and added-device list
Check Box	Left click	Select or Cancel	Copy a channel to other channel
Character	Null	Instruction	Headline, Name

### 2.4.2. Common button introduction

Name	Function	Name	Function
Close	Close user operation window	Copy	Copy the channel setting to other channels
Application	Save configuration and put into effect.It won't close current window	Default	Set all parameters to default.
Confirm	Save configuration and put into effect. It will close current window	Check All	Select all items of current window
Cancel	Cancel just now operation	Single check	Select one item of current window

### 2.4.3. Preview window icon instruction

Preview window icon	Instruction	Preview window icon	Instruction
	Recording		Window setting alarm without trigger



Window remote control



Window move alarm

## 2.5. Menu Instruction

**Bottom menu:**system setting, screen layout,rotation, zoom in/out, output adjust, PTZ control, snapshot, snapshot filemanager, recording plan setting, video replay, system close

**Context menu:**video management,system setting, video replay, recording plan setting, screen layout, snapshot, remote IPC setting, PTZ control, snapshot filemanager, output adjust, system close

**Status menu:**cloud logging status,cloud ID,disk capibility information, QR code

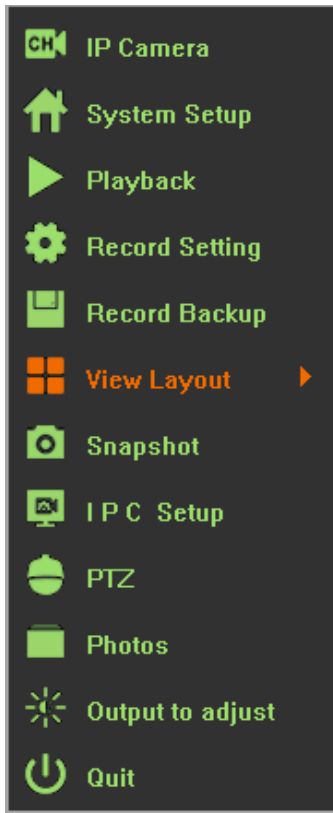
### 2.5.1. Bottom Menu

Move mouse to screen bottom,will popup following menu



### 2.5.2. Context Menu

Right click on desktop to popup following menu :



### 2.5.3. Cloud Logging State

Move your mouse to the top of the NVR screen and you'll see the QR code.



## 3. Device Installment

### 3.1. Installment Attention

As professional monitoring device, when user use our HD NVR, Please read below information before use

1. Device should keep away from moist,high temperature and strong magnetism, please put in well ventilated areas
2. Please use formal normal SATA hard disk.
3. Please confirm equipment ground correction,power supply can't pass operation voltage range of power work and suggest user to use standard power
4. Don't power off during device running, please close our device through system software firstly then outage in case had disk damage

## 3.2. Hard Disk Installation

**Note:switch off power before installation.**

Step 1: twist off the sideway sreew of NVR case,take down upper cover plate

Step 2: align screw-socket on HDD and case bottom plate,screw on HDD screw and fix

Step 3: connect hard disk data line to main board and the other to HDD.

Step 4:cover upper cover plate and fix screw



1



2



3

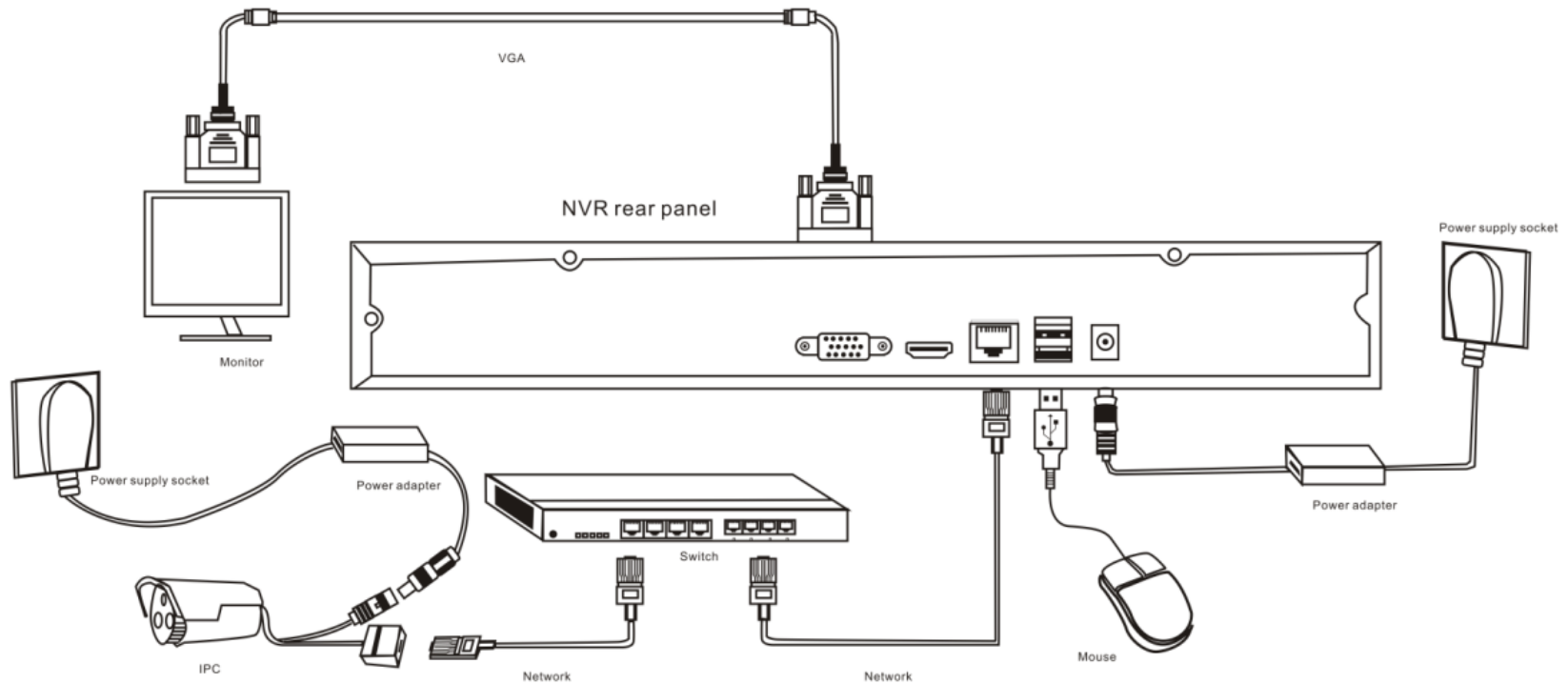


4



### 3.3. Connection Peripherals

#### 3.3.1. Basic Device Connection

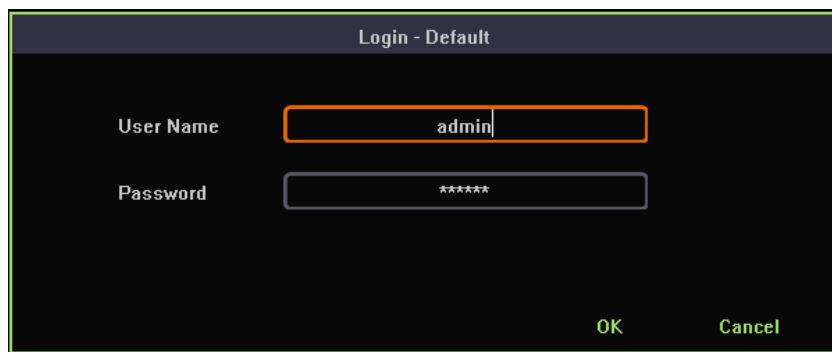


## 4. System Function Introduction

### 4.1. Login/Close Down

#### 4.1.1. Login

When NVR system starts, it will search and connect IPC devices automatically and then popup login dialogue, as the following picture shows:



#### Operation steps :

1. Left click "user name" context box and input user name. Default: admin;
2. Left click "password" context box and input user name. Default ;123456;
3. Left click "OK" button to validate your user info.

## 4.1.2. User Log Out

**Function instruction:**Log out after you have saved the configuration in case that unidentified user access to your NVR.You can also configure an auto-logout parameter to log out automatically.

**Operation steps:**manual log out, enter system main menu---right click ---select “close system”---click on“logout” button

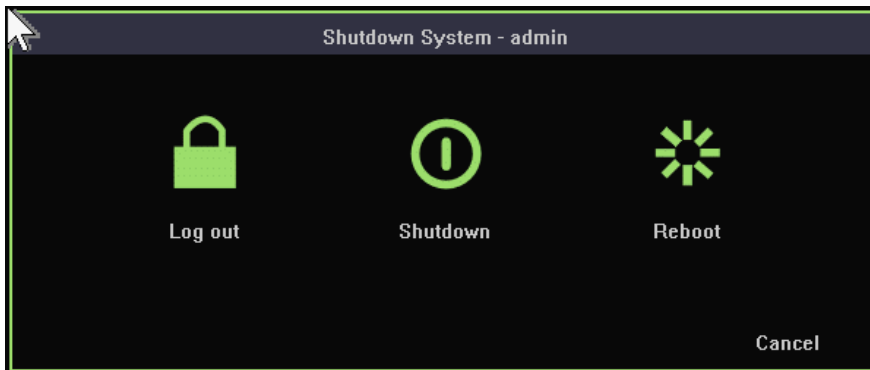
Auto log out,enter main menu---right click---select“system setting”---general,set auto log out time

## 4.1.3. Close System

**Function instruction:**reboot or shut the system down

**Operation steps:**

1. Left click ‘Quit’button in system main menu



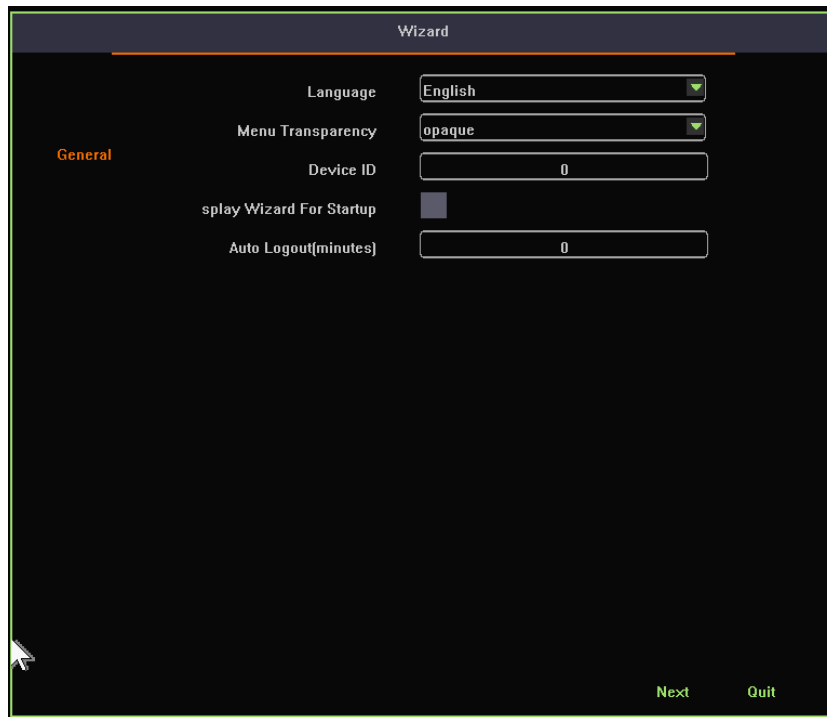
2. Left click ‘Shutdown’, the system will close

## 4.2. Boot wizard

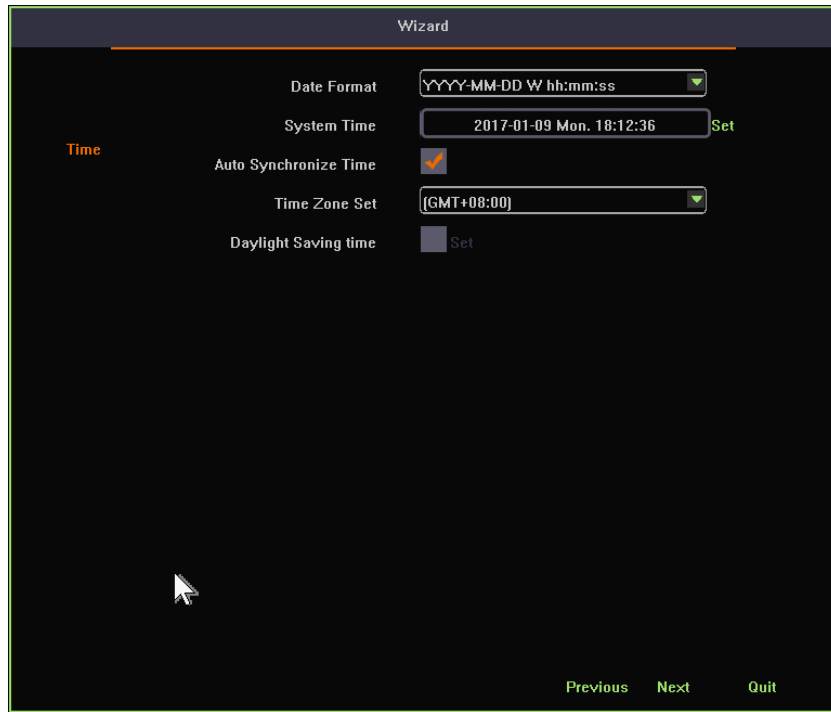
**Function instruction:** Help user make a basic configuration

**Operation steps:**

Setting 1: Set up system language,menu transparency,device number,auto logout time and whether the wizard window shows again when you reboot again.



Setting 2:Set up date format, date, time zone, daylight saving time



Setting 3:Network settings

Wizard

Connection

DHCP

self-adaptively conflict

IP Address 192 . 168 . 1 . 118

Subnet Mask 255 . 255 . 255 . 0

Gateway 192 . 168 . 1 . 1

MAC Address 00:92:6b:24:06:2a

Primary DNS 192 . 168 . 1 . 1

Secondary DNS 202 . 96 . 134 . 133

Cloud Website http://www.seetong.com

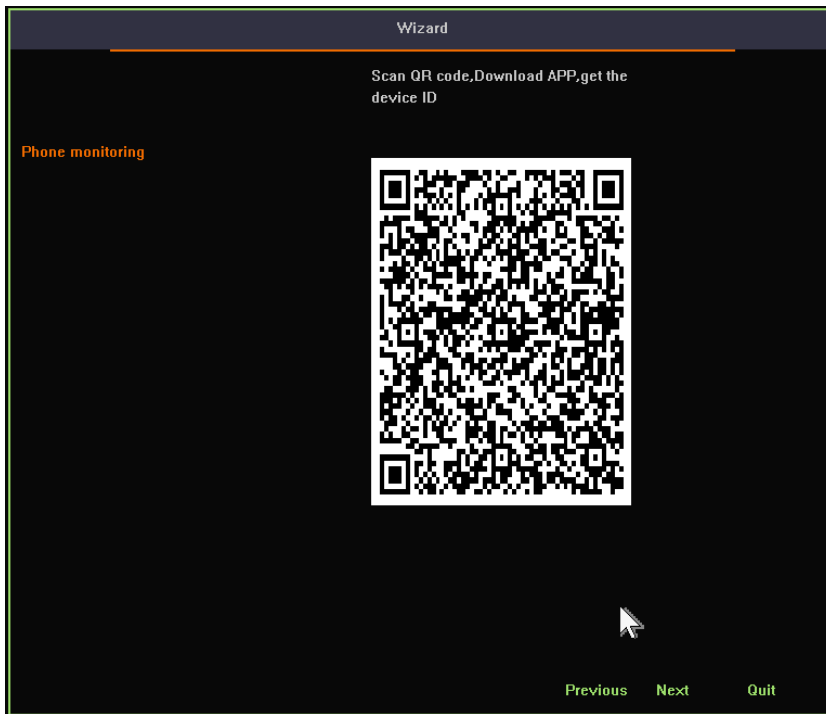
Device ID 2646641

P2P State Online

Cloud desktop show

Previous Next Quit

Setting 4:Scan QR code to download Seetong app and get NVR's device ID



Setting 5:HDD formatting and recording strategy



Setting 6:List all IPC devices. Left click 'OK' button to finish the wizard.

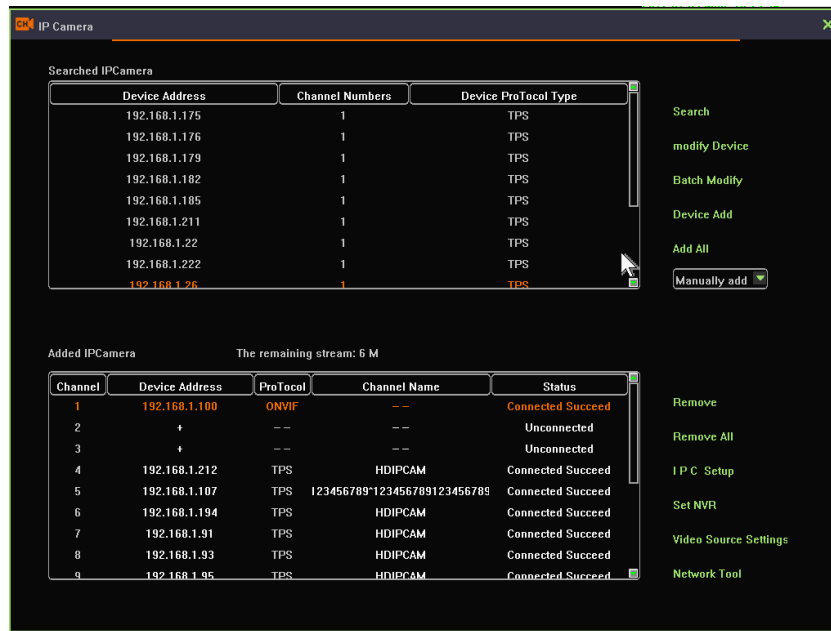
## 4.3. Video Management

### 4.3.1. Search Device

**Function instruction:**Search all private protocol IPC devices under the same network. Especially, ONVIF devices must have the same network segment or else ONVIF device won't appear in the Device list.



**Operation steps:**Right-click on desktop, and then select video management in context menu. Click on ‘search’ button and finish the search operation.



### 4.3.2. Add Device

**Function instruction:**Add private or ONVIF protocol IPC devices to NVR

**Operation steps:**

1. Right-click on desktop and then select video management. Select one item in the device list.
2. Left click on ‘Device Add’ button or Double-click on the selected item and you can add the device to NVR.

### 4.3.3. Delete Device

**Function instruction:**used to delete IPC device

**Operation steps:**

1. Turn to video management window. Select a device in the added list
2. Left click 'Delete' button to delete the selected device.

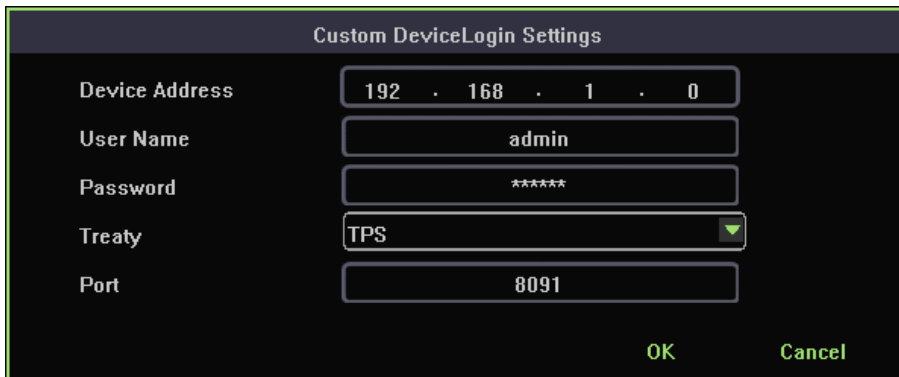
**Note:**Left click ' delete all' will delete all devices in the added list

### 4.3.4. Manual Add

**Function instruction :**used to add IPC devices manually

**Operation steps :**

1. Turn to video management window and double-click on the '+'.System turns to a new dialogue as the following picture shows:



Custom DeviceLogin Settings

Device Address	192 . 168 . 1 . 0
User Name	admin
Password	*****
Treaty	TPS
Port	8091

OK Cancel

2. Input the IP address, user name, password, treaty, port and left-click 'OK' button to finish the operation

REMARKS: If your want to add an ONVIF device to NVR, you need to change the protocol type to ONVIF.

### 4.3.5. Modify IP address

**Function instruction:** Modify the IP address of a device

**Operation steps:**

1. Turn to video management window and select an item in the device list.
2. Left click on 'Modify device' button
3. Input the new IP address, gateway, netmask and finish the operation.



Modify IP - 192.168.1.179	
IP Address	192 . 168 . 1 . 179
Subnet Mask	255 . 255 . 255 . 0
Gateway	192 . 168 . 1 . 1
User Name	admin
Password	*****
OK Cancel	

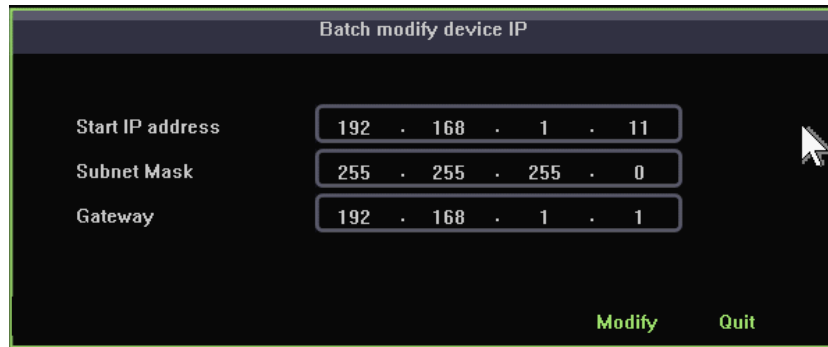
### 4.3.6. Batch Modify IP address

**Function instruction:** Modify IP address of series of IPC device

**Operation steps:**

1. Turn to video management window and select an item in the device list.
2. Left click on 'Batch Modify' button.

3. Input the start IP address, gateway, netmask and finish the operation.



Batch modify device IP

Start IP address	192 . 168 . 1 . 11
Subnet Mask	255 . 255 . 255 . 0
Gateway	192 . 168 . 1 . 1

Modify Quit

### 4.3.7. Channel Order Exchange

**Function instruction** :adjust channel order and exchange any two channel.

**Operation steps:**

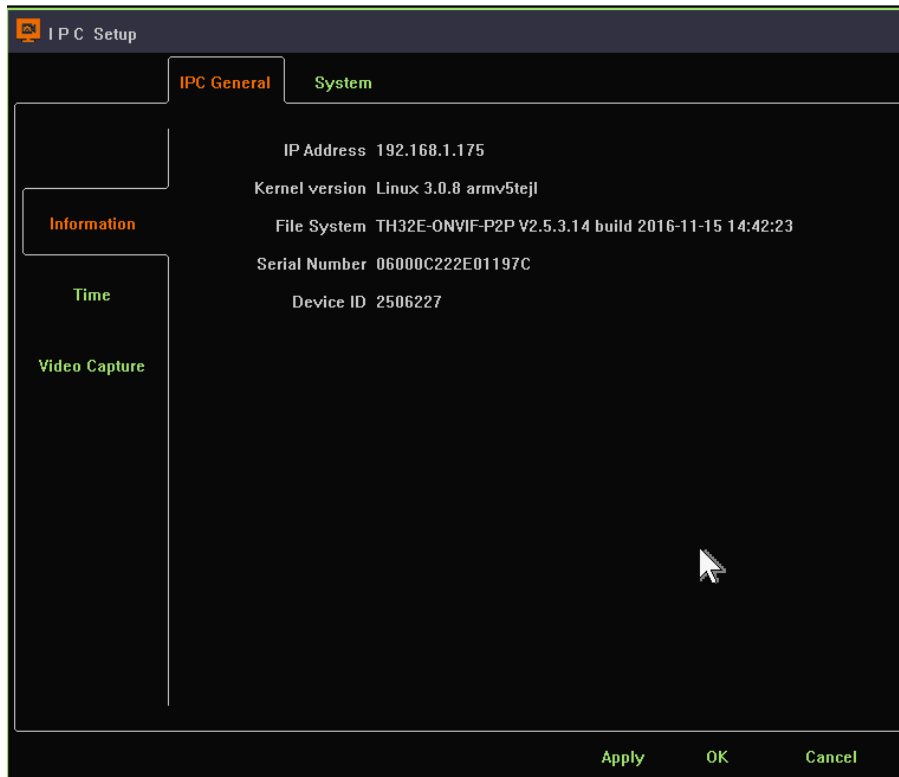
1. Turn to desktop,left-click to select a channel
2. Drag the channel to the channel you want to exchange with and finish the operation.

### 4.3.8. IPC Setting

**Function instruction:** Used to setup IPC configuration.

**Operation steps:**

1. Turn to video management window and select an item in the device list.
2. Left click on 'IPC Setup' button.



### 4.3.9. NVR Network Settings

**Function instruction:**Used to examine and set NVR network information

**Operation steps:**

1. Turn to video management window and select an item in the device list.
2. Left click on 'Set NVR' button.



Detailed function list

IP Name	Function Description	Remarks
<b>IP Address</b>	Used to set/modify NVR's IP address	
<b>Subnet Mask</b>	Used to show NVR's subnet mask information	
<b>Gateway</b>	Used to show NVR's gateway address	
<b>Primary DNS</b>	Show NVR primary DNS information	
<b>Secondary DNS</b>	Show NVR secondary information	
<b>MAC ADDRESS</b>	Used to show NVR MAC address information	

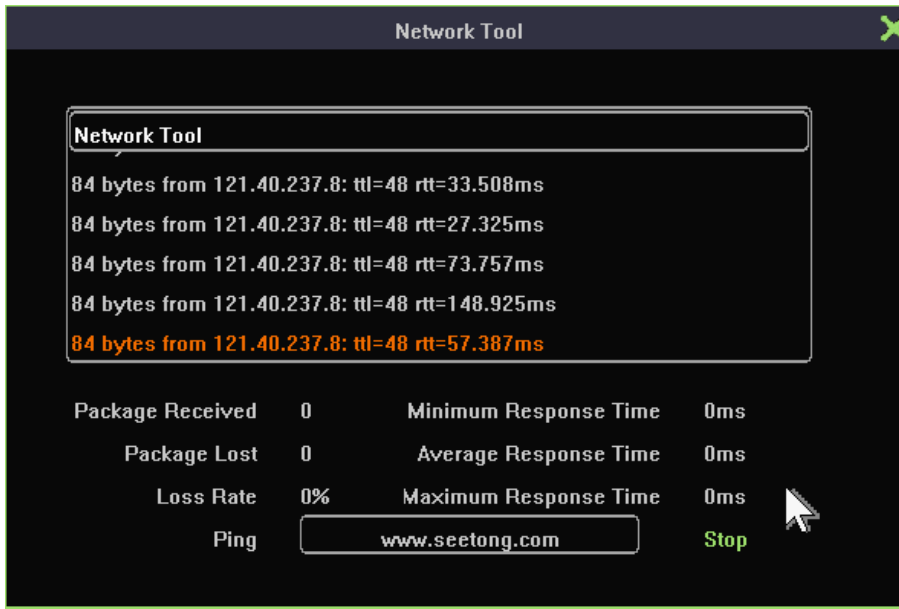
<b>Auto acquire IP (DHCP)</b>	Used to gain IP address automatically	When USE DHCP, you can't modify IP address manually
<b>IP Self-adapt</b>	Used to self-adapt IP address when IP conflict occurs	
<b>Cloud Number</b>	Show NVR device ID	
<b>Website</b>	Show website of cloud platform	
<b>Cloud State</b>	Show NVR P2P state	You can remote access to NVR device only when the Cloud State is 'online'
<b>Cloud desktop show</b>	Control whether you would like to see P2P state at the top of desktop	

## 4.3.10. Network tool

**Function instruction:** Examine your current network condition

**Operation steps:**

1. Left click 'IP camera' in contextmenu.
2. Click 'Network Tool'button. System turns to network tool window as the following picture shows:



3. Click 'start' button, this tool will send ARP packet to destination. The default destination is 'www.seetong.com'
4. After you click 'stop' button, this tool will give you a statistic of the current network information.
5. You can also input your own IP address, domain name or localhost to check your network condition.

## 4.4. IPC Setting

### 4.4.1. Check IPC General Information

**Function instruction:** Used to check IPC information, such as IPC system kernel version, file system, product serial number, software version and so on.



## 4.4.2. Time Setting

**Function instruction:** Set date, system time, time zone, time synchronization

**Operation steps:** Right-click on desktop, select 'IPC setting' and turn to 'time' window.

**Detailed function list :**

Function Name	Function Description	Remarks
Time Set	Used to set IPC's system time	
Self-Synchronizing	Used to synchronize system time with internet	IPC will proofread with network server only after it connect to the internet
Time Zone	Set the time zone of IPC	Choose correct time zone before checking time.
Daylight Saving Time	Used to set IPC daylight saving time's start and end or clock'delay or advance	
Copy	Copy selected channels time to all other channels	

## 4.4.3. IPC Remote Maintenance

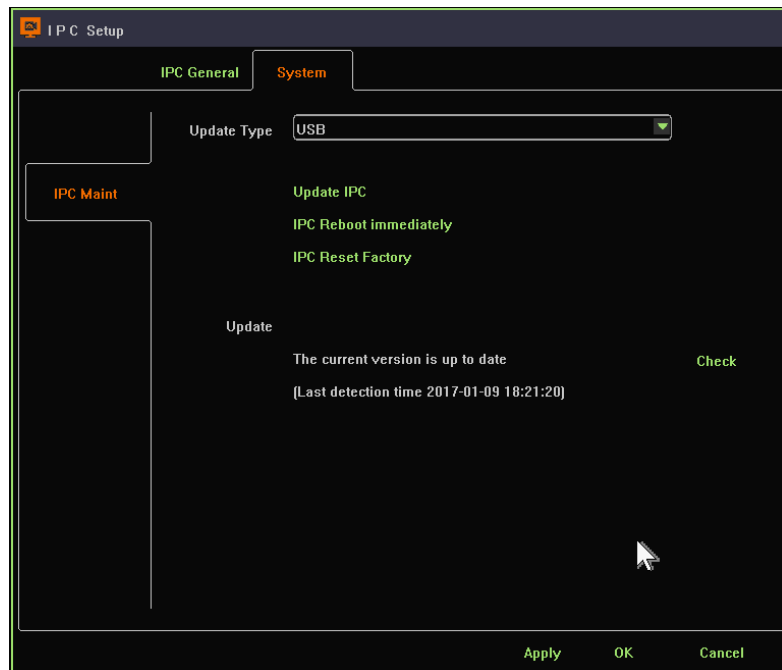
### 4.4.3.1. Upgrade IPC

**Function instruction:** upgrade IPC using u-disk

**Operation steps;**

1. Select the channel you want to upgrade. Right-click on desktop and select 'IPC setting'submenu.

## 2. Turn to IPC maintainence window



## 3. Insert U-disk and left-click on 'upgrade IPC' button

## 4. Select the correct fireware, click 'OK' button and finish IPC upgrade operation

### 4.4.3.2. Restart IPC Device

**Function instruction:** Used to restart IPC through operation on NVR

**Operation steps:**

1. Select the channel you want to upgrade. Right-click on desktop and select 'IPC setting'submenu.
2. Turn to IPC maintainence window
3. Left click on 'IPC reboot immediately'button and finish the operation.

#### 4.4.3.3. IPC Reset Factory

**Function instruction:**IPC reset factory operation

**Operation steps:**

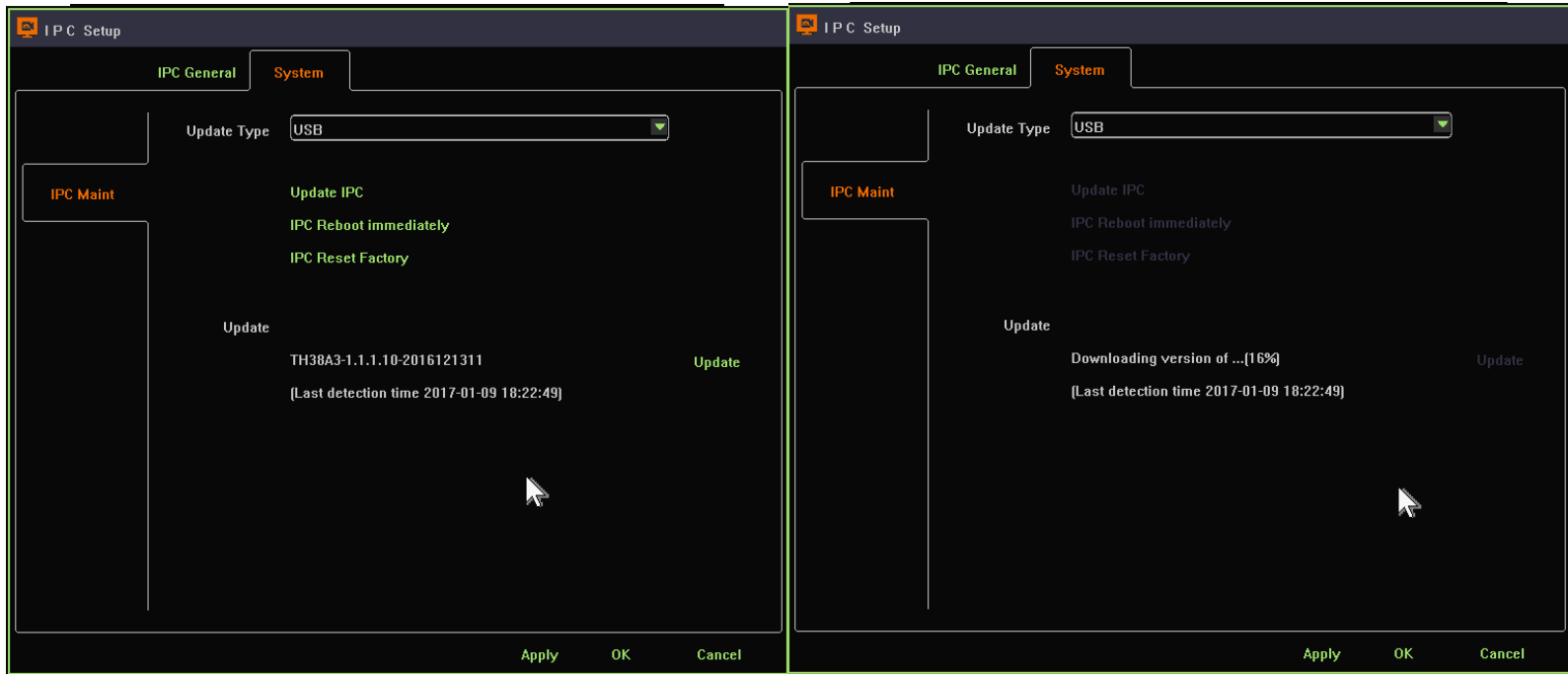
1. Select the channel you want to reset. Right-click on desktop and select 'IPC setting'submenu.
2. Turn to IPC maintainence window
3. Left click on 'IPC reset factory' button and finish the operation.

#### 4.4.3.4. Remote Upgrade

**Function instruction:** IPC upgrade through web server online.

**Operation steps:**

1. Select the channel you want to upgrade. Right-click on desktop and select 'IPC setting' submenu.
2. Turn to IPC maintainence window
3. Left click on 'check' button, if there's new version on web server, click 'upgrade' button and then it'll download the newest fireware on web server and upgrade automatic.



## 4.5. Screen Layout

**Function instruction:** Used to adjust different screen layout, including view 1/2/4/8/9/16/25/36

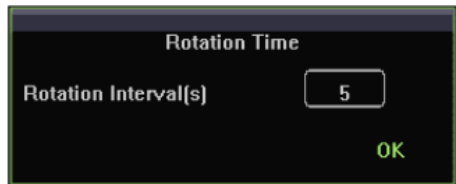
**Operation steps:**Right-click on desktop and select 'View Layout' submenu. Then, you can change different screen layout.

## 4.6. Rotation

**Function instruction:** Take turns to preview video stream according to current screen layout

**Operation steps:**

1. Move mouse to bottom menu and click on the rotation icon



2. Input the rotation interval and click 'OK' button.
3. Click on the rotation icon again will stop current rotation operation.

## 4.7. Electronic zoom in and zoom out

**Function instruction:** Zoom in/out part of the region to get details of the video stream.

**Operation steps:**

1. Select a channel that you want to zoom in
2. Move mouse to bottom menu and click on the magnifier icon
3. Scroll mouse middle button to zoom in or out.
4. Click single picture or drag the green area to zoom in
5. Right-click to terminate zoom-in operation

Remarks: Zoom in/out is effective only in 4-channel-NVR, 8-channel-NVR and 16-channel-NVR

## 4.8. Output Adjust

**Function instruction:** Used to set different output effects

**Operation steps:**

1. Move mouse to bottom menu and click on the 'output to adjust' icon
2. Left click the combobox which include 4 modes.
3. Select 'custom' mode and you'll be able to adjust the parameters on your own.
4. Click on 'OK' button to save current configuration and close the window.

## 4.9. Screenshot

Used to snapshot any frame picture of real time video monitoring or replay and manage the pictures

### 4.9.1. Snapshot Capture

**Function instruction:** real-time video monitor picture capture, frame picture capture in replay, linkage alarm picture capture and store them into HDD

**Operation steps:**

1. Right-click on desktop and select snapshot capture. Mouse pointer will become 'tongs' shape

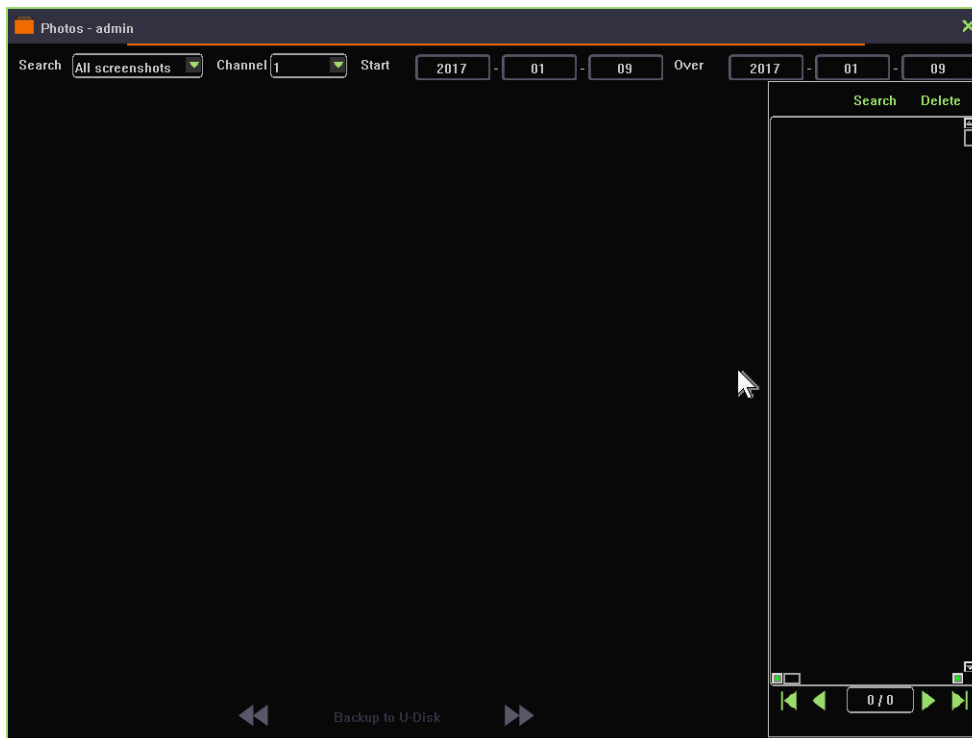
2. Left click on screenshot video window, you'll get a jpg picture.

## 4.9.2. Picture Management

**Function instruction:** Manage screenshots and there are three types of screenshots, manual screenshots, alarm screenshots and video screenshots

**Operation steps:**

1. Left click 'picture management' in context menu, system open picture management window as the following picture



2. Left click'search type'combobox and select one type, default is 'all screenshots'
3. Click'channel' combobox and choose the channel number of screenshot, default is channel 1.
4. Left click'start/end'date editbox,input time quantum of screenshot, default is your system time.
5. After finishing the search condition setting, Left click'search' button,system will show eligible screenshot result in the list on the right.Select an item and you'll see the screenshot.
6. Select a picture and then click 'delete' button, you'll be able to delete picture files.

### 4.9.3. Picture Export

**Function instruction:** backup screenshot file into U-disk or move them into HDD

#### **Operation steps**

1. Insert U-disk into USB interface on NVR
2. Left click any picture's checkbox, or select all checkbox to backup picture
3. Left click'Picture Export' button,wait until backup finish.

## 4.10. Recording Function

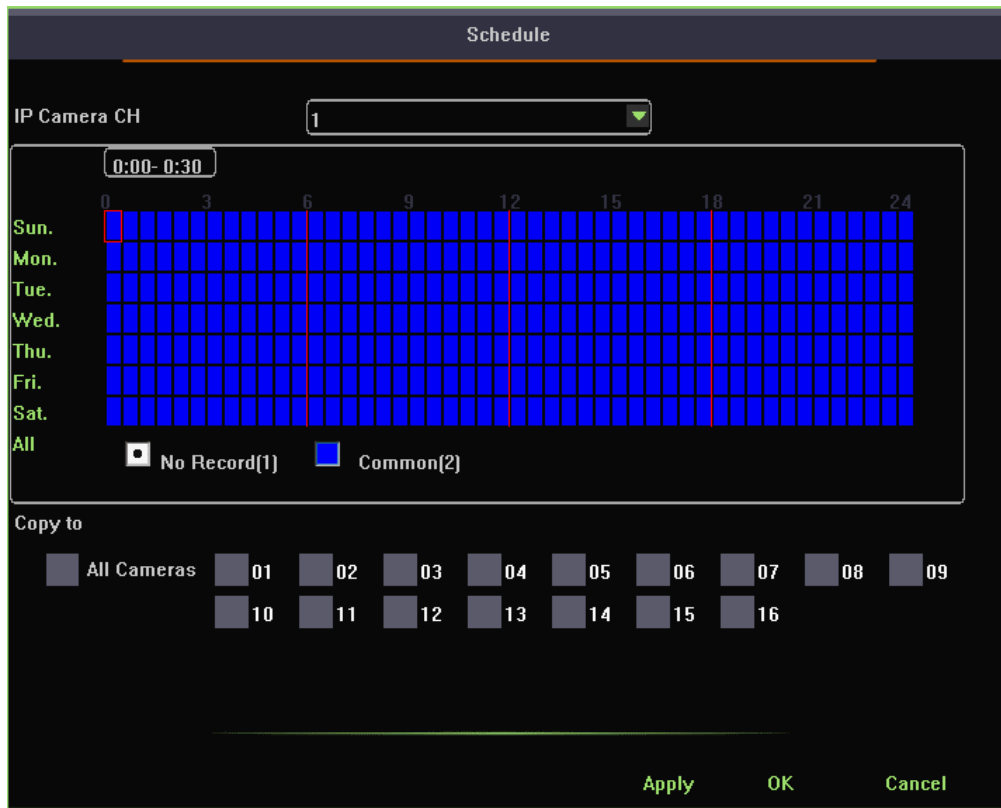
### 4.10.1. Set Recording Plan

**Function instruction:** set recording plan



**Operation steps:**

1. Left click 'recording plan' in contextmenu or in bottom menu, system will open a new window as the following shows:



2. Left click 'No Record' or 'Common' and drag to make a recording plan you'd like. You can also click on the button on the left to make a simple and rapid recording plan.
3. After finishing your recording plan setting, you can copy current configuration to other channels.

## 4.10.2. Playback Recording

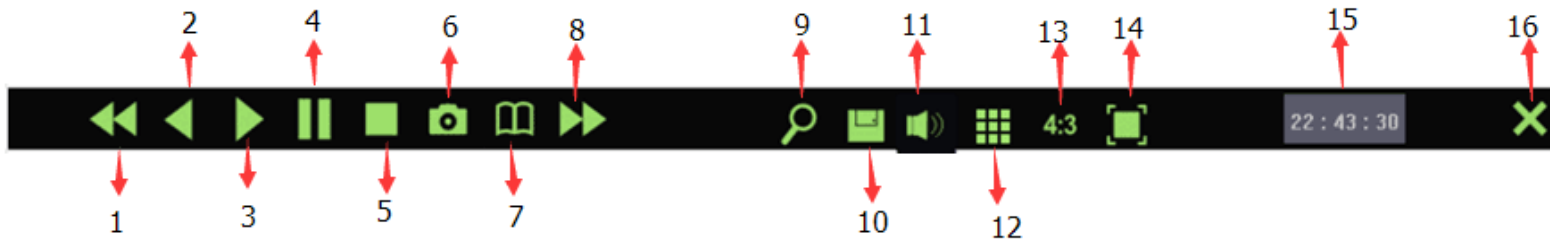
**Function instruction:** Used to search video recording data.

**Operation steps:**

1. Left click 'playback' button in the bottom menu or in contextmenu, system will open video replay window.
2. Left click calendar and date, orange color indicate that there's video recording data while gray indicate there's no video recording data.
3. Select the record type, channel you want to search. There's 3 types of record type, common, motion, alarm. The color of Common video is blue while alarm is red and motion is green.
4. After finishing your setting, double-click on the video recording bar to play the video recording data.

## 4.10.3. Playabck Control

**Function instruction:** Used to operate on video recording data, such as playback, suspend, fast backward, speed, slow, backup, start/close audio, screenshot, full screen playback, playback window proportion adjustment.



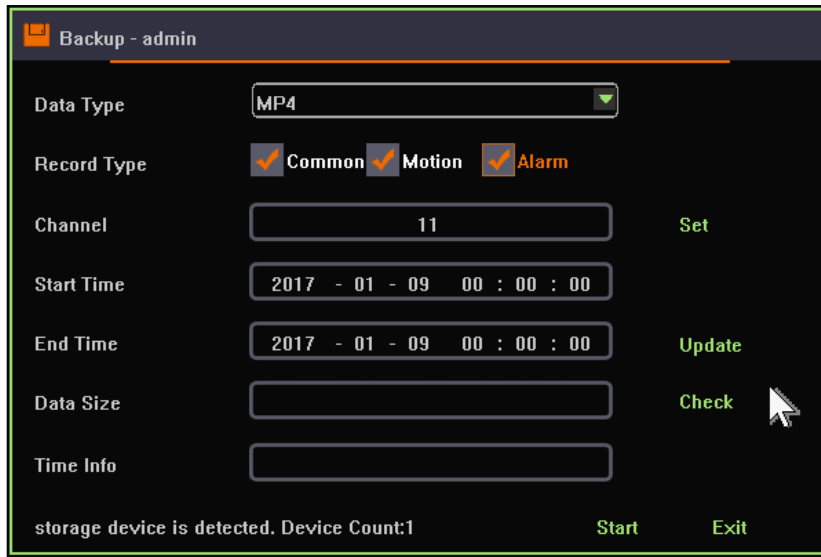
Serial number	Name	Explanation	Serial number	Name	Explanation
1	Fast backward	Recording back fastly	9	Digital Zoom	Zoom in record video
2	Choose Fast backward	Choose back fastly	10	Backup	Enter backup interface
3	Start playback	Click playback	11	Audio	start/close video audio
4	Suspend	Suspend playback	12	1/4 screenlayout switch	playback recording
5	Stop	Stop playback	13	Aspect ratio	Cut 4:3/16:9 playabck screen ratio
6	Screenshot	Capture to recording playback	14	Full screen	Playback full screen
7	Time fast forward	Fast forward by time	15	Time Scale	Show playback time
8	Speed	Video fast forward	16	Close	Exit playback page

#### 4.10.4. Video Backup

**Function instruction:** backup video file to U-disk or HDD

**Operation steps:**

1. Left click 'backup' button in video playback toolbar,system will open a new dialogue as the following picture shows:



2. Left click data type's pull down option, choose backup video format, default format: H.264 AVI
3. Mouse choose alarm types such as ' type,alarm,common,manual,move',system default ; all types video.
4. Left click ' setting' button, choose video backup channel.
5. Left click start and end time, click update button after time setting, can check certain time quantum need capacity size.
6. Insert USB into NVR interface when backup, click 'check' button in single page, system will detect USB
7. Click 'start' to backup selected video, time information will show backup's timing.

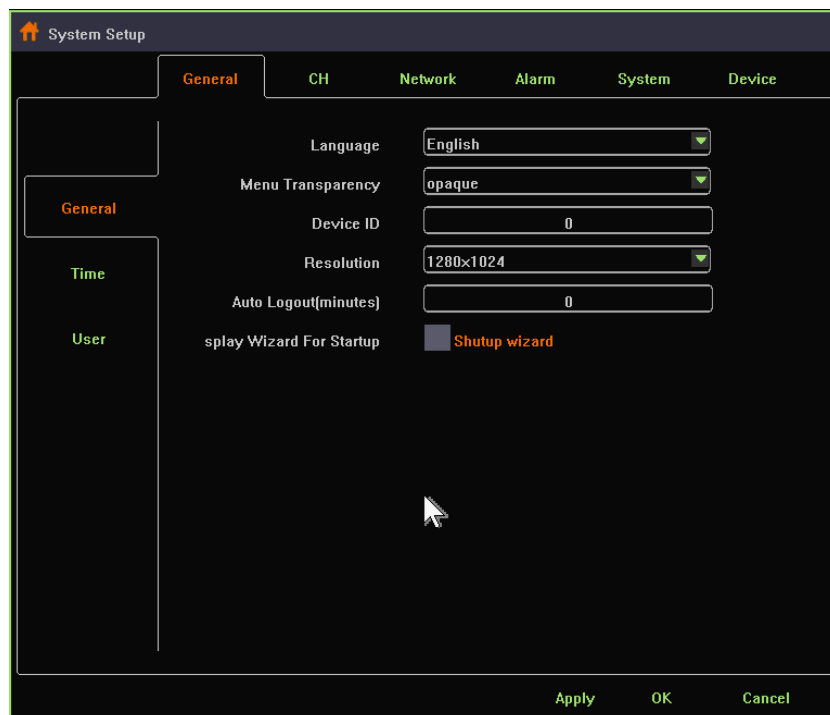
Tips: Install media player and you'll be able to check the video backups.

## 4.11. System Settings

### 4.11.1. General Setting

**Function instruction:** general function setting like language, transparency, device number, output resolution, wizard, auto log out time

**Operation steps:**Left click 'system setting' in contextmenu or in bottom menu, system opens a new dialogue as the following picture shows:



**Detailed Function List**

Function Name	Function Description
Language	Set NVR system language,support Chinese/English
Transparency	Set user interface transparency,support transparent/translucence/opacity
Device Number	Set NVR device number
Resolution	Set the resolution from NVR to display, support 1920×1080、1280×1024、1024×768
Auto Lock Time	Set auto lock time
Start Show Guide	After checking the function, it will show wizard window when system starts.
Boot wizard	Open wizard configure window

## 4.11.2. Time Setting

**Function instruction:** set time, date format, time zone setting, time synchronize

**Operation steps:**

1. Left click system setting in main menu or context menu, system will open setting window.

**Detailed Function List**

Function Name	Function Description	Remarks
Date Format	Set date format such as YYYY-MM-DD W hh:mm:ss/YYYY-MM-DD hh:mm:ss/MM-DD-YYYY W hh:mm:ss/MM-DD-YYYY hh:mm:ss	
System Time Set	Set NVR's date	Include year,month,week, hour,minute, second
Auto gain network time	After check the function, NVR will proofread time with network server and save	After connecting network, NVR will proofread time with network server

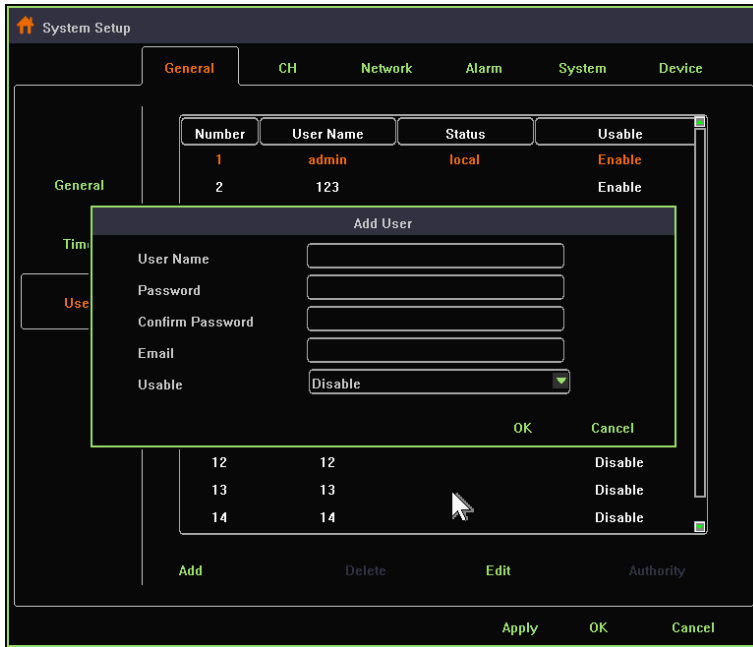
<b>Time Zone</b>	Set NVR's time zone	Choose zone before network time proofread, or else cause time deviation
<b>Daylight Saving Time</b>	After checking the function, start daylight saving time	
<b>"Set"button</b>	Set daylight saving time start and end	

### 4.11.3. User Setting

**Function instruction:** Used to administrate local user and network user

**Operation steps;**

1. Left click 'system setting' in contextmenu or in bottom menu
2. Left click 'user' function on the left of system setting window.



**Function List:**

Function Name	Function Description	Remarks
User List	Show local and network user list	
“Add”Button	Add new user name and password,check if it is available	Add the same user name
“Edit”Button	Edit existing user information,like password	Admin user can’t close
“Delete”Button	Delete new added user information	Admin user can’t delete
Set Permission	Set user permission	admin user own all permission



**Local user permission list**

<b>Local user permission</b>	<b>Permission explanation</b>
System setting	Own all operation permission
Manual recording	Own channel start/close and manual recording operation permission
Playback	Own channel recording playback operation permission
Preview	Own channel preview permission
PTZ control	Own PTZ control/ call preset/call route operation permission
File management	Own snapshot picture operation permission
Recording backup	Own recording backup operation permission
Close system	Own shutdown/restart operation permission
Email notice	Own alarm linkage send email operation permission

**Network user permission list**

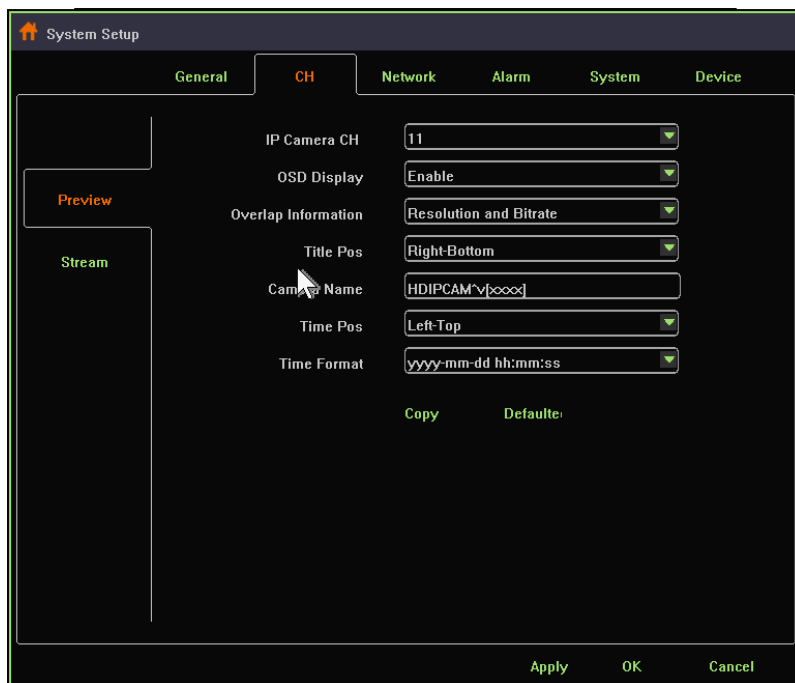
<b>Network user permission</b>	<b>Permission Explanation</b>
System setting	Own remote system setting permission
Manual recording	Own remote set manual recording permission
Voice talkback	Own remote voice talkback operation permission
Remote playback	Own remote playback operation permission
Remote preview	Own remote connection/remotely monitoring selected channel operation permission
PTZ control	Own remote PTZ control operation permission
Remote update	Own remote update operation permission
Close system	Own remote close system permission

## 4.11.4. Preview Setting

**Function instruction:** Used to set IPC stream parameters and OSD settings.

### Operation steps

1. Left click 'system setting' function in contextmenu or in bottom menu, then system open a new dialogue.
2. Left click into 'channel preview setting' in system setting window, system will open preview setting dialogue as the following picture shows:



**Detailed Function List:**

Function Name	Function Description
<b>IP Channel</b>	Show the channel number of current setting
<b>OSD Show</b>	show/hide OSD info
<b>Overlap additional information</b>	Set overlap additional information, including 'no overlay',overlay resolution',overlay code rate, "overlay resolution and code rate"
<b>Headline position</b>	Heading message positon setting, support top left,bottom left,top right,bottom right
<b>Channel Name</b>	Channel name setting, support number,character,capital and small letter and Chinese input
<b>Time position</b>	User set channel overlay position, support top left,bottom left,uppder right, bottom right
<b>Time show format</b>	User set channel time format

## 4.11.5. Stream Setting

**Function instruction:** set system channel's main stream rate and sub stream parameter

### **Operation steps;**

1. Left click 'system set'in contextmenu or in bottom menu,then system open a new window.
2. Left click'channel'in system interface,system open a new dialogue as the following picture shows:



Detailed function list

Function name	Function Description
IP channel	Set current channel number
Encoding format	Main/sub stream encoding format setting,support H.264, H.265.
Resolution ratio	Main/sub stream resolution ratio setting, NVR provide resolution ratio option based on IPC ability level
Bit rate control	Main/sub stream bitrate control setting,support VBR and CBR

<b>I-frame interval</b>	Main/sub stream I-frame interval setting, range from 1-200
<b>Bit rate</b>	Main/sub stream bit rate setting, range from 100~10000kbps
<b>Frame rate</b>	Main/sub stream frame rate setting, the larger the frame rate, the fluency is better

## 4.11.6. Network Setting

**Function instruction:** Configure network parameters and check out NVR device ID and P2P state.

### Operation steps:

1. Left click 'system setting' in contextmenu or in bottom menu.
2. Left click 'network', system will open network configure dialogue.

### Detailed Function List:

Function Name	Function Description	Remarks
<b>IP Address</b>	Show NVR's IP address, support manual set and input IP address	
<b>Subnet Mask</b>	Show NVR's subnetmask	
<b>Gateway</b>	Show NVR'IP gateway	
<b>Primary DNS</b>	Show primary DNS information of NVR	
<b>Secondary DNS</b>	Show reserve DNS information of NVR	
<b>MAC Address</b>	Show MAC address information of NVR	
<b>Auto gain IP (DHCP)</b>	Used to gain IP address automatically	When use DHCP, you can't modify IP address manually
<b>IP Self-adapt</b>	Used to self-adapt IP address when IP conflict occurs	

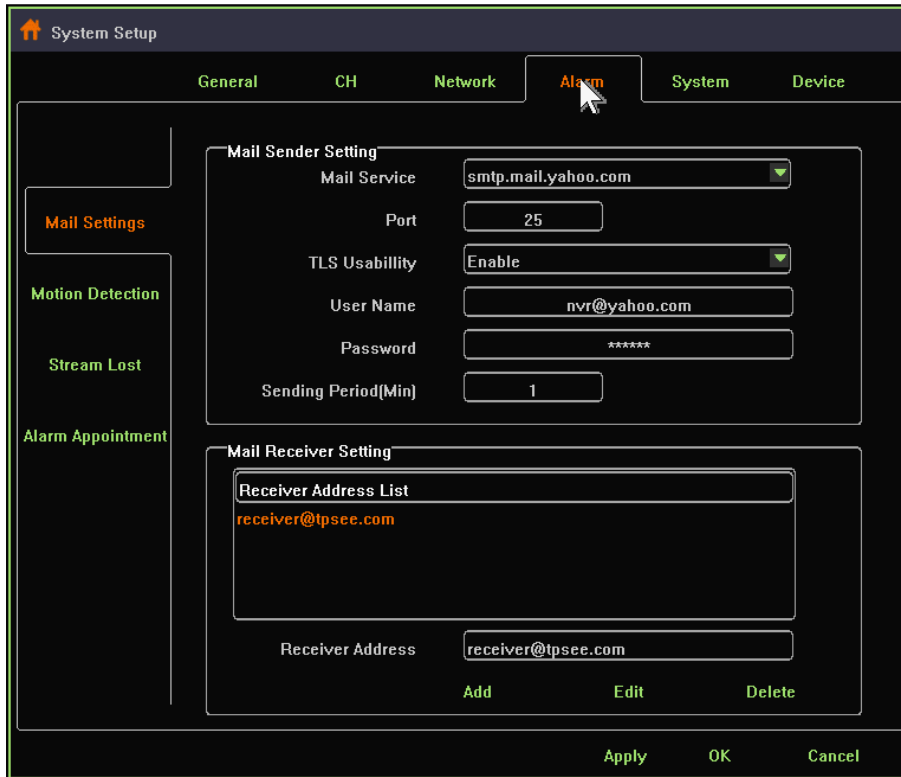
<b>Cloud ID/Device ID</b>	Show NVR device ID	
<b>Cloud state</b>	Show NVR P2P state	You can remote access to NVR device only when the Cloud State is 'online'
<b>Cloud desktop show</b>	Control whether you would like to see P2P state at the top of desktop	

## 4.11.7. Email Setting

**Function instruction:** set email alarm parameter

**Operation steps:**

1. Left click 'system setting' in contextmenu or in bottom menu.
2. Left click 'alarm' in system setting window, click 'OK' button after finishing email configuration.



**Detailed Function List:**

Funciton Name	Function Description
<b>Email Service</b>	select email server name,including smtp.163.com, smtp.qq.com, smtp.mail.yahoo.com, smtp.126.com, smtp.qiye.163.com
<b>Port</b>	Set email server port number, default is 25
<b>TLS usability</b>	Control whether start email service’s encryption: support smtp.qq.com and smtp.mail.yahoo.com after you select ‘Enable’

<b>User name</b>	Mail sender's username
<b>Password</b>	Mail sender's password. Attention! You should use authorized code as your password if you choose qq mailbox, 126 mailbox or 163 mailbox company version.
<b>Send interval</b>	Mail send interval, default is one minute, you can't send any other email in one minute
<b>Recipient List</b>	List all receivers' mail address
<b>Receiver Address</b>	Input receiver's mailbox
<b>"Modify"button</b>	Modify the mail address in the recipient list
<b>"Add"button</b>	Add a new mail address to the recipient list
<b>"Delete"button</b>	Delete a mail address from the recipient list

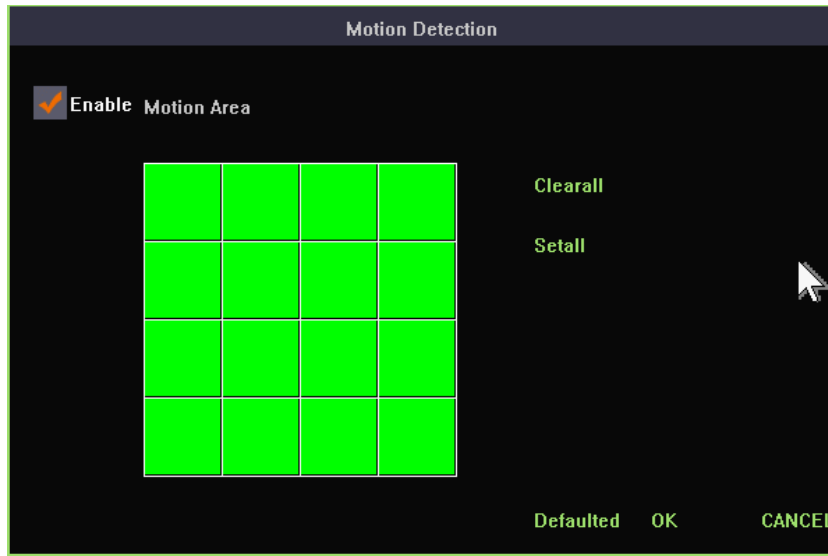
## 4.11.8. Motion Detection Alarm

**Function instruction:** when Motion detected, NVR will trigger motion alarm.

**Operation steps:**

1. Left click 'system setting' in the contextmenu or in bottom menu.
2. Left click 'Motion detection' option in system setting window, system will open motion detection dialogue. Tick off the Enable checkbox and start motion alarm
3. Left click 'setting' button, then you'll be able to change motion area of IPC device.





4. Left click 'alarm linkage' button, you'll be able to configure alarm items in the dialogue.

#### Detailed Function List:

Function Name	Function Description	Remarks
<b>Alarm lasting time setting</b>	Used to set how long the motion alarm lasts	
<b>Buzzer alarm</b>	Control whether to activate buzzer alarm	
<b>Email alarm</b>	Control whether to send email when motion alarm detected	
<b>Send screenshot</b>	Control whether to add attachment when sending an email	
<b>Snapshot image</b>	Control whether to grab images when motion alarm detected	
<b>Call preset</b>	Control whether to adjust PTZ device current position when motion detected	
<b>Start recording</b>	Control whether to record when motion alarm detected	

**Flashing**

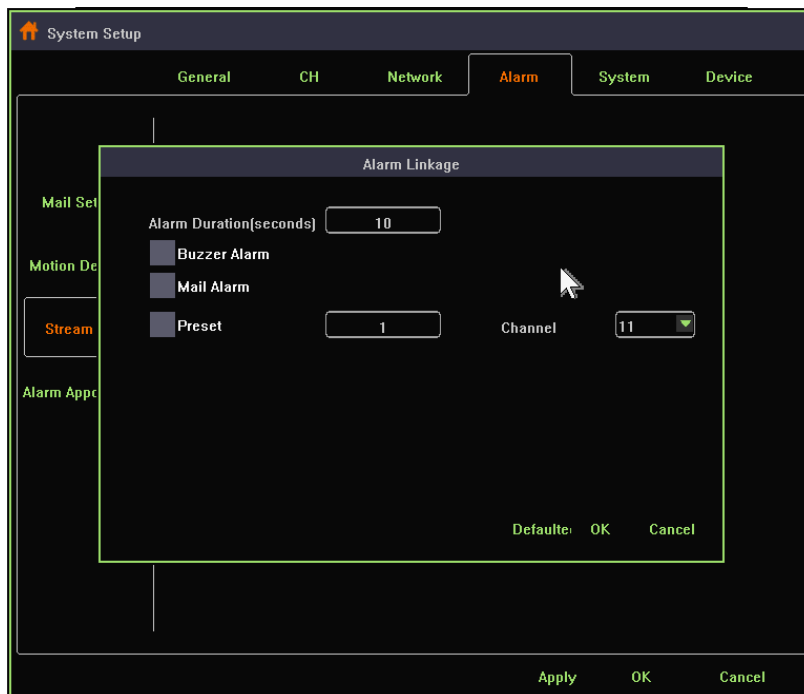
Control whether to flashing when motion alarm detected

## 4.11.9. Video Lost Alarm

**Function instruction:** NVR will trigger alarm after detecting video lost

**Operation steps:**

1. Left click 'system setting' in contextmenu or in bottom window.
2. Left click 'stream lost' in system setting window, system turns to a new dialogue. Tick off the Enable checkbox to start video lost alarm.



3. Left click 'alarm linkage' button., you'll be able to configure alarm items in the dialogue

**Detailed Function List:**

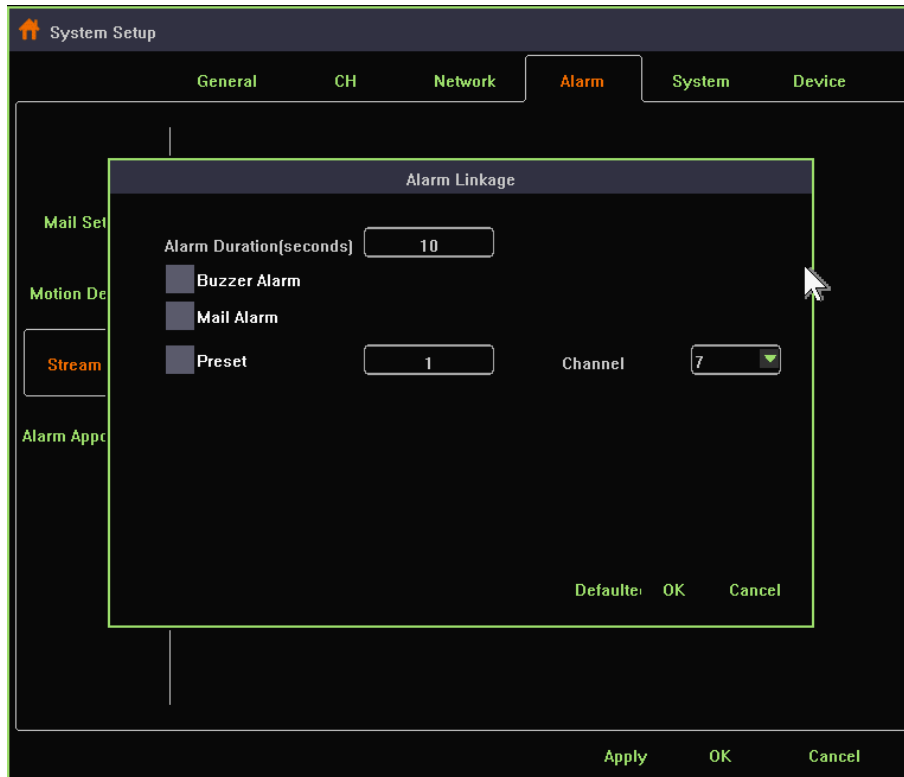
Function Name	Function Description	Remarks
Alarm lasting time setting	Used to set how long the motion alarm lasts	
Buzzer alarm	Control whether to activate buzzer alarm	
Email alarm	Control whether to send email when motion alarm detected	
Call preset	Control whether to adjust PTZ device current position when motion detected	

## 4.11.10. Alarm Appointment Setting

**Function instruction:** configure alarm schedules of motion alarm and video lost alarm.

**Operation steps:**

1. Left click 'system setting' in contextmenu or in bottom menu.
2. Left click 'alarm appointment' in system window, system turns to a new dialogue. Just as the following picture shows:



3. Left click 'appointment time setting' button and you'll be able to adjust the schedule of alarm events.

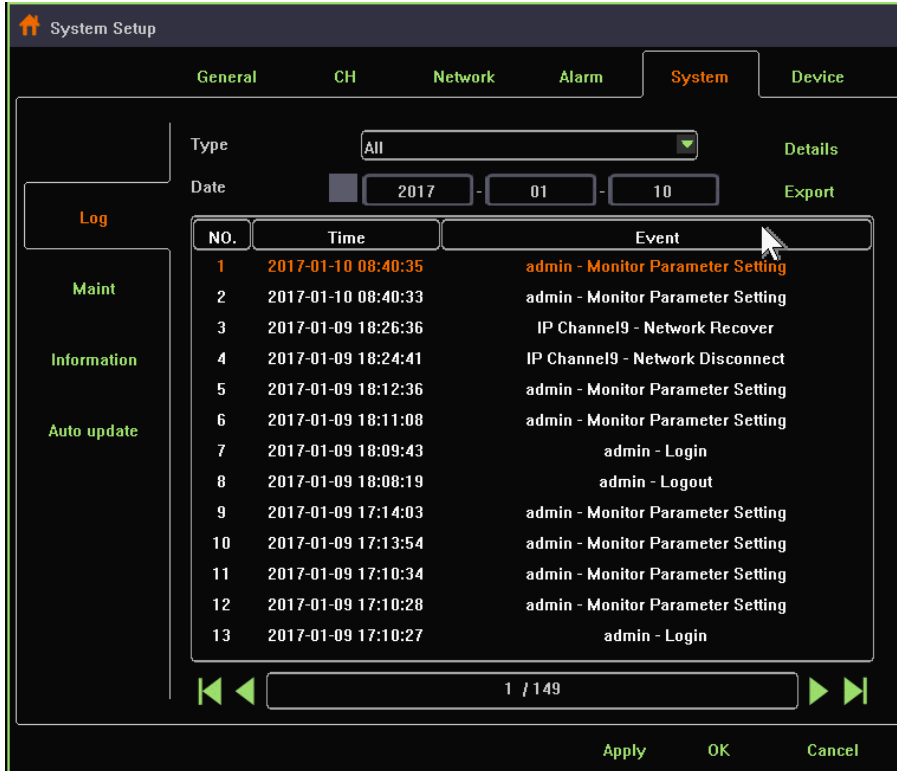
#### 4.11.11. System Log

**Function instruction:** Used to search and export NVR's log information

**Operation steps:**

1. Left click 'system setting' in context menu or in bottom window.

- Left click 'system-log' in system setting window. The system turns to a new dialogue as the following picture shows:



- You can search log by changing 'type' and 'date' settings. For detail info, click on 'Details' button.
- Left click 'export' button, you can export selected item in the list to your u-disk or other storage devices.

## 4.11.12. System Maintenance

**Function instruction:** Maintain the NVR system, including restart system according to schedule, upgrade using u-disk, reset factory,

import/export

**Operation steps;**

1. Left click 'system setting'in contextmenu or in bottom menu
2. Left click 'maintain'in system setting window, system turns to 'system maintenance'.

**Detailed Function List:**

Function Name	Function Description	Remarks
Reboot Setup	Restart system according to schedule	Default state is close
Update type	Different way to upgrade system	
Update	Used to upgrade system by u-disk	Do not power off when updateing, or else NVR can't restart
Export	Export current configuration to storage devices	
Import	Import configuration from u-disk to NVR system	
Reset factory setting	Reset all settings to their default value	

### 4.11.13. System Basic Information

**Function instruction:** Used to show NVR system information,including product model,device ID,product serial number, software version, hardware version,website, QR code

**Operation steps;**

1. Left click 'system setting'in contextmenu or in bottom menu.
2. Left click 'system information' in system setting window, system turns to 'information' dialogue.

## 4.11.14. Auto Upgrade

**Function instruction:**Used to upgrade through web server online.

**Operation steps:**

1. Left click 'system setting' in contextmenu or in bottom menu.
2. Left click 'auto upgrade' in system setting window, system turns to 'Auto upgrade' dialogue.

REMARKS: You must ensure that your NVR have connected to the Internet.

**Detailed Function List:**

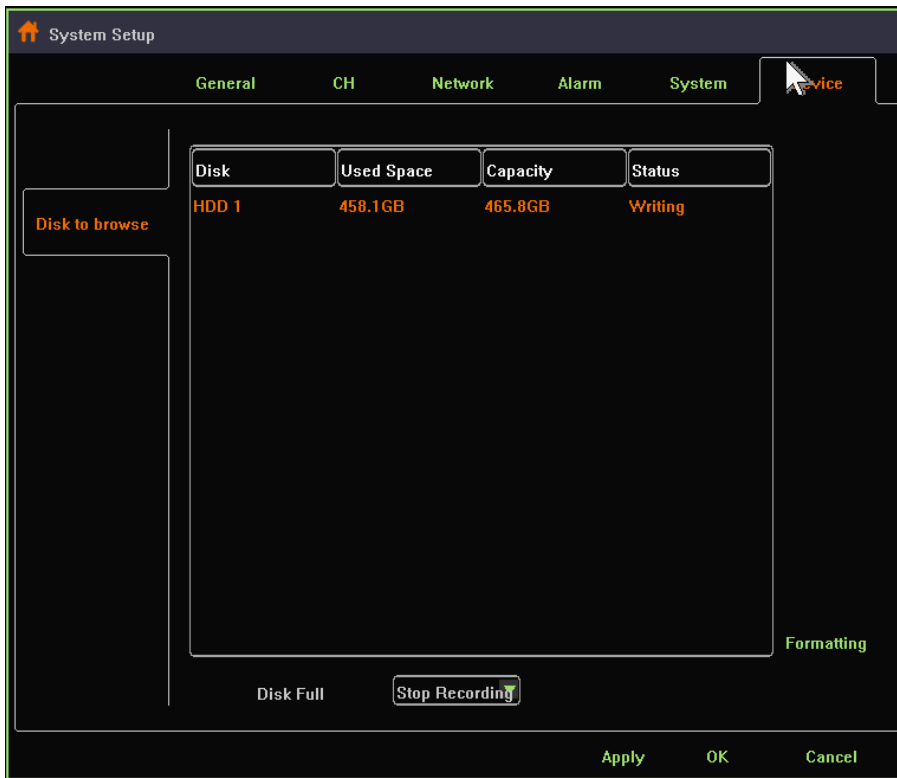
Function Name	Function Description	Remarks
Check	Used to check whether there's new version on the remote server	The dialogue shows 'The current version is up to date' if there's no latest version. Besides, The dialogue shows the latest version if there's new software version
Upgrade	Left click to update to latest version	Be sure that your NVR have already connected to Internet before upgrade.
Auto upgrade	Used to upgrade automatically	
Upgrade time	Used to set auto-upgrade time	This setting come into effect only when you Tick off 'Auto upgrade'

## 4.11.15. Storage Device

**Function instruction:** Used to check disk information, HDD formatting

**Operation steps:**

1. Left click 'system setting ' in contextmenu or in bottom menu.
2. Left click 'Device' in system setting window, system turns to 'Device' dialogue as the following picture shows:



3. Select one item in the storage device list. Click 'formatting' button to format HDD.
4. We also provide different strategies when your HDD is full. 'Overlay Write' will continue to record and overlap the earliest video recording data. You can also select 'stop recording' as your strategy that NVR stops recording as soon as the HDD is full.



## 5. Appendix

### 5.1. Hard Disk Capacity Calculation

Code Rate	Recording File Size/Day/Channel
1000kbps	10G
2000kbps	20G
3000kbps	30G
4000kbps	40G
5000kbps	50G

#### 5.1.1. Hard Disk Total Capacity Corresponding Video Days Calculation( H.264 compression + Low Bit Rate

HDD total capacity	路数 Chanel Number	Resolution Ratio	Video Days
8T	8	960P X 8	80 days
8T	8	1080P X 8	50 days
8T	16	960P X 16	40 days
8T	16	1080P X 16	25 days
8T X 2	25	960P X 25	50 days

8T X 2	25	1080P X 25	32 days
8T X 2	36	960P X 36	35 days
8T X 2	36	1080P X 36	22 days

Remarks: the above data is calculated by H.264 & low rate bite, when onvif IPC access NVR, the video days will reduce half.

## 5.1.2. FAQ

### 1. What is NVR default user name and password?

user name : admin, password: 123456

### 2. Why I can see nothing when I start the system?

Step 1:Check NVR if it has electricity, user can check mouse lamp,ethernet port and so on, we suggest use NVR standard power

Step 2: Check display resolution, our NVR default resolution: 1024x768. When the maxium resolution of display is less than NVR, there is no interface output

Step3:Check interface if there is output after deleting all outside device and power on by itself, our NVR support VGA output and HDMI signal

### 3. After starting interface, it prompts 'NO HDD'

Step 1:Confirm NVR to connect regular hard disk without fault

Step 2:Confirming NVR's power is enough, we suggest customer to use standard power.

Step 3:Confirming NVR HDD power interface and SATA interface is normal

### 4. User can't check cloud ID

Step 1:NVR only can gain cloud ID after connecting internet, it can check cloud ID through moving mouse to the margin top of main interface

Step 2:Enter NVR's main interface, click right key,enter'system setting-system-basic information', check product serial number if it is legal,the illegal serial number begin with "FFFFFFFF\*\*\*\*\*"

#### 5. Video management page can't search IPC

Step1:Check NVR if it is connected to cable, we can check Ethernet port flicker to judge

Step2:If user can't search ONVIF IPC, please confirm ONVIF IPC AND NVR is in the same network segment, confirm IPC to support ONVIF 2.1 and above version

#### 6. Prompt channel is kicked out

Step1:The IPC total bandwidth to NVR is limited, when channel is kicked out, please reduce relative channel code rate

#### 7. When multi channel NVR connect IPC, Video happen blocked, no smooth,off line

Step 1:We suggest user to use gigabit switch when IPC channel to connect NVR is more than 16CH